

HUMANLY



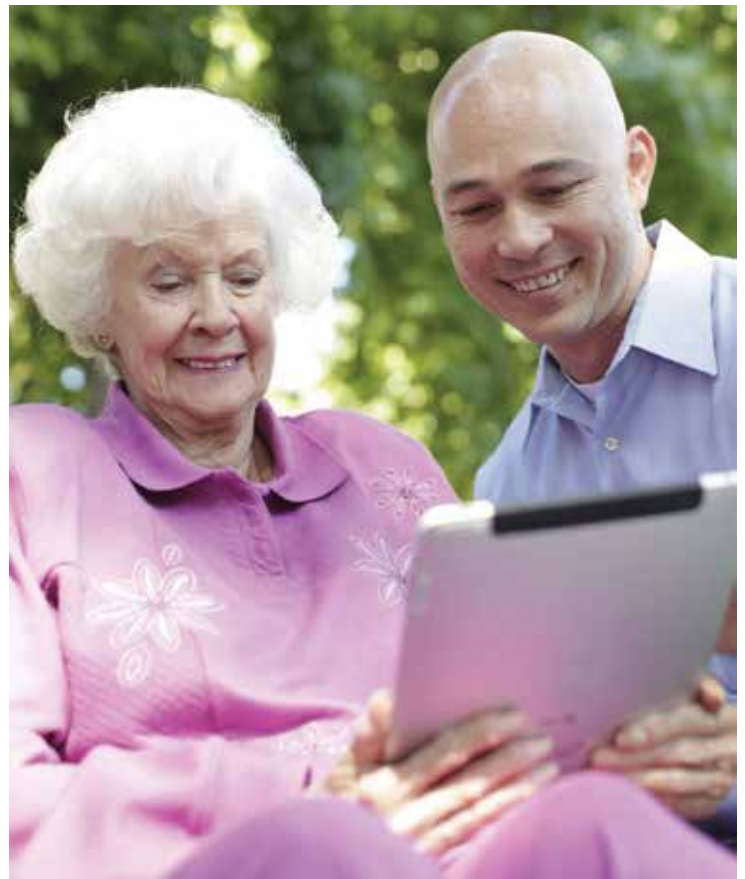
POSSIBLE.SM

Innovation creates new opportunities to meet needs

When we talk about what is ‘**humanly possible**’ we often use words like ‘**creative**’ ‘**untapped**’ ‘**transformative.**’

At **Front Porch**, we are determined to harness the innovative spirit of our people and to create new opportunities to meet needs. Our vision is clear. Our culture is strong. We strive to harness this exciting motivation and desire to serve. We will grow in a uniquely Front Porch way — together. The touch points of **Humanly PossibleSM** are simple. Front Porch was born in partnership and innovation. To achieve something new and meaningful is part of our DNA and part of our promise. Our success comes from both the spirit of the individual and the strength of community. We rely on each other and on the collaborative spirit of our partners. We are better together. Our openness to new ideas and new ways of doing things creates new possibilities. We ask questions. We assess needs. We forge new and innovative directions. We serve with excellence.

We continually teach ourselves and our colleagues about the power of innovation and the eight actions that help us achieve our mission every day. It is part of our culture. We set goals, we try new approaches, we revise and retool, we try again. We acknowledge and celebrate when we get it right. We try never to say, ‘well that’s the way it’s always been’... Innovative thinking takes courage. It is bold. It is both art and science.



At Front Porch, creating inspiring communities and finding new ways to meet needs is what we do. And when we ask ourselves what is humanly possible, we find the answer lies with us.

**Humanly PossibleSM is
built on three pillars:
Cause-based innovation
Collaboration
Individual Initiative**

Impact

Here are just a few examples of Humanly PossibleSM in action:

Summer House memory care innovations: Residents who live with dementia in our Summer House memory care neighborhoods were recently introduced to Paro, a robotic baby seal. Other innovations include new technology enabled music therapy programs from Music and MemorySM and Singfit and LifeBio, a unique life narrative program.

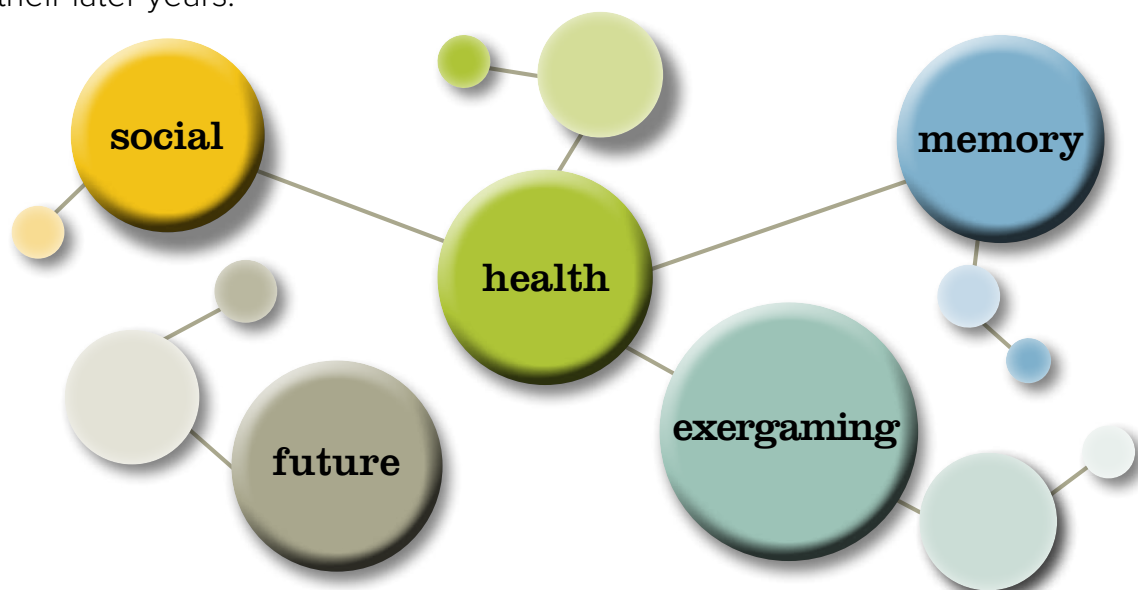


Telehealth comes to affordable housing: Residents living in our CARING Housing Ministries communities have better access to care through a pilot project that brings tele-health, tele-mental health and tele-dentistry to individuals with limited access to resources.

Cybercycling and 'exergaming' is all the rage at Front Porch: Thanks to the introduction of innovative 'exergames' Front Porch teams include national champion Wii bowlers at Walnut Village and cybercyclists like the Fredericka Manor Cyclepaths are cycling their way to wellness.

Social and emotional engagement enhanced by technology: Helping individuals strengthen connections with friends, family and a support network is critically important to living well. Current collaborations include piloting solutions to support easy-to-use email, video chats, photo sharing, Internet and social networking, as well as virtual concierge programs.

Front Porch Center for Innovation and Wellbeing pilots new projects: A signature program of Humanly PossibleSM, the Center is working on expanding innovative service to older adults, including residents in our retirement and affordable housing communities and collaborating with universities, tech companies and community organizations to find new uses of technology to help people live well, especially in their later years.



Philanthropy Fuels Innovation

We are grateful for the personal commitment of residents and donors who are joining the Humanly PossibleSM cause and creating a legacy to fund the future.

watts project

Sunny View is on the Cutting Edge of Technology

Through the generosity of residents Lyn and Bruce Watts, Sunny View has launched the 'Watts Project' to enhance resident care through innovation and technology. Inspired by a pilot project of Intel and the Front Porch Center for Innovation and Wellbeing, this project brings new technology in the form of tablets and training for Sunny View staff. When the Watts' heard about the success of the pilot and the impact on resident care, they wanted to donate more tablets for even better results. The Watts will contribute additional funds each year to help keep the project funded into the future.

"I said somebody should do something about that... Then I realized I am somebody"

—Lily Tomlin

piers project

*Front Porch Center for Innovation and Wellbeing
Receives Grant to Confront Online Security*

Ellie Piers, a Carlsbad By The Sea resident for many years, was tech savvy and recognized the importance of internet safety. She wanted part of her legacy to go toward protecting others from cyber criminals who often target seniors with financial scams. The problem of cyber crime is significant with over a billion dollars lost each year as a result of cyber crime. With a generous gift to the Front Porch Center for Innovation and Wellbeing, Ellie created a legacy that will support innovative work to help combat cyber crime aimed at seniors. Known as the 'Piers Project', collaborative work with cyber security experts, law enforcement leaders and financial and technology firms has begun to address this important topic.



Ellie Piers

Organic Human

Different Limitless



With Humanly PossibleSM, we expand upon the forward-thinking philosophy that has always guided us. We are connected to a common goal and changing the playing field through creativity, collaboration and individual initiative.

When we think about how we can create opportunities to enrich the lives of others, there are eight actions we can take. Each demands attention, discipline – and even courage – to do well. Together they can transform not just the way we think, work, and grow, but they can transform the lives we touch.

observe Through keen perception, we can discover and identify where needs and possibilities lie.

inquire Asking why or why not to get a vivid understanding of what's possible.

expand A willingness to expand supports our commitment to forge new directions.

link Making connections between apparently unconnected things is where creative problem-solving takes off.

imagine When insight and knowledge inform imagination, dreams turn into the kind of ideas that can change everything.

experiment When we are willing to dream big – and embrace what we learn if we fail – we move toward real insight and achievement.

collaborate Through unique partnerships and connections, we expand out in all directions, connected to a common goal.

inspire Nothing is more fundamental to growth and fulfillment than feeling inspired. It's what motivates us, gives our endeavors meaning, and energizes us to "go for it."

Create a legacy


Significant work is being done to support you now and into the future.

Your commitment and vision expands the ability of Front Porch to make a real difference in specific and meaningful ways.

What will your legacy be? Join us as we continue to ignite the possibilities for the future. If you are moved to do more, contribute your voice and create your legacy with a gift to support the Humanly Possible Fund.

Contact your foundation executive for information on specific funding opportunities.

Thank you for your sharing the vision and creating a legacy in support of what's Humanly PossibleSM!



Alone
we can
do so little,
together we
can do so
much.”

—Helen Keller

For more Humanly Possible stories, please visit:
www.frontporch.net/what-is-humanly-possible

Front Porch
800 north brand blvd., 19th floor
glendale, ca 91203
tel 818-254-4100
fax 818-254-4101
www.frontporch.net