



Front Porch
Ethics Service

“Embracing Our Values” 2023 ART FEST

Employees use art to demonstrate how our values make Front Porch a unique and dynamic place to work and connect.



Connect

We welcome everyone's contributions. Our greatest resource is our people. The relationships we share build community and strengthen us.



Build Trust

Our actions inspire trust and confidence. We treat each other with respect and fairness. We are open, inclusive, honest and keep our promises.



Collaborate

Our best performance happens when we learn and grow together. Through listening and communication, we seek input, share ideas, and work as one team to accomplish our goals.



Lead Responsibly

Leaders unlock potential, empower others, and share responsibility for strategy and results. Together, we take initiative to do what is right and achieve high standards.



Inspire Creativity

We do everything Humanly Possible® to create our future. As a team, we take risks and learn from success and failure. We are courageous, open-minded and encourage fresh ideas.



Embrace Change

Everything is changing, from needs to expectations to the world around us. To succeed, we must constantly adapt and improve, delivering service excellence and achieving outstanding customer satisfaction.

1st
Place



Connect - the intertwined branches show how everything is connected and how Front Porch strives to establish meaningful connections between employees, customers and partners.

Build Trust - the roots are firmly rooted in the ground, the solid trust that Front Porch builds with its stakeholders.

Collaborate - the branches intersect and support each other to foster collaboration and teamwork.

Lead Responsibly - the top of the tree, which rises towards the sky, lead responsibly and exemplarily, inspiring others to follow its example.

Inspire creativity - the leaves of the tree foster creativity and innovation in their approach.

Embrace Change - the constantly moving branches embrace change and adapt to new circumstances and challenges.

The tree is made up of 54 columns and wire roots, representing the 54 Front Porch communities. Each branch represents the 3,000 employees. Each leaf symbolizes the 7,500 residents.

Carlos Vargas
Wesley Palms

Wire hangers, paint

2nd
Place

Front Porch staff and residents reach out and build community. The hand extends to represent that reach, that intention. There is energy that comes from that intention powered by our values. Holding the mission in our palm, the root of the intention we build community together.

Jessica McCracken
Creative Spark, Community Services

Watercolor and pen





Tree of Life and Mother Earth

3rd
Place

Evokes connection, growth and care in our community. This is weaving a sense of trust, collaboration and inspiration, guided by responsive leadership.

This nurtures emotional ties and physical health connections, fostering love for others in the community, in our evolving life chapters.

Embrace the beauty within each person, beyond mere appearances or initial encounters. Just as a book's true essence lies beyond its cover, so too does the depth of soul. Approach every action with a heart brimming with love and extend a special warmth. Take the time to truly listen, allowing them to share their emotions and need, offering them the gift of empathy from the depths of your being.

Ni Pande Putu Etiartini
Wesley Palms

Paint on canvas



Each person's fingerprint represents one staff, the value that is more important to them and how they belong to the family that is Canterbury Woods.

Canterbury Woods Staff
Canterbury Woods

Ink on poster board



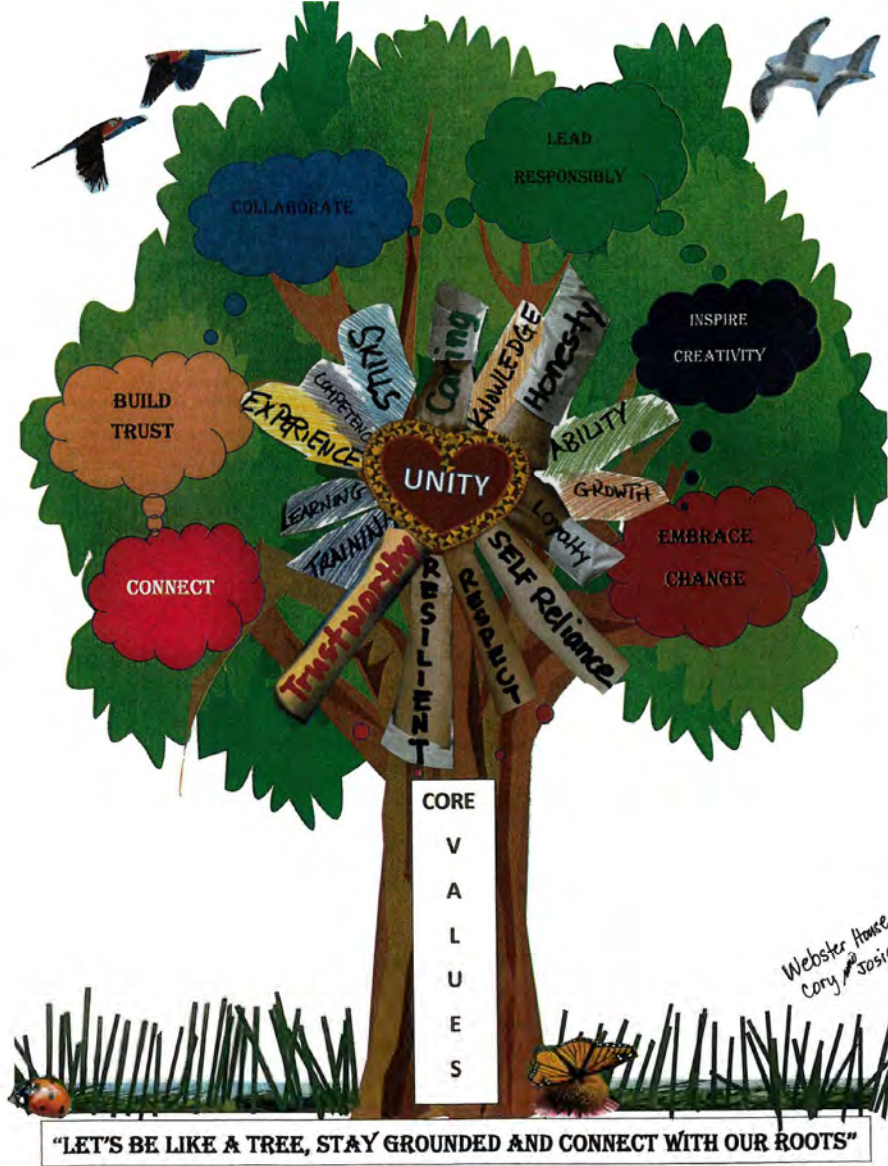
The C.N.A. rabbit with the resident rabbit in the wheelchair builds a relationship as she assists to the destination.

They talk through and work together how to carefully get there. She explains honestly and with dignity why it is important to get there safely.

The C.N.A. rabbit takes the initiative to do the right thing to achieve the highest standard of results and does everything Humanly Possible® by paying attention and listening to the resident rabbit. She shows that she can adapt and improve to provide the quality services needed to satisfy and provide outstanding customer satisfaction to the resident rabbit.

Telma Alvarado
Kingsley Manor

Crochet



Cory Mallari and Jocelyn Zelazny
Webster House Health Center

Paper, tape, twig



Susana Aureus, Me Cho, Perfecto Ibañez,
Josep Lim, Carlos Valencia, Guadalupe Viramontes
Pilgrim Tower, CARING Housing Ministries

Video



The basket represents all Front Porch communities. The colors used in the drawing matches the Front Porch core values. Planting seeds along with proper care, fruit will grow. The fruits represent the way we are planting our Front Porch core values to provide the best service to residents, family members and staff.

“What we plant now, we will harvest later.”

Yolanda Robles, Connie Chun, Yvonne Yi, Stephanie Pineda,
Luis Aldana, Edgar Vasquez, Noel Palad and Camilo Oviedo
Vista Tower, CARING Housing Ministries

Acrylic and watercolor on canvas

TOGETHER - FOOTPRINTS IN THE SANDS OF TIME

As I walk the path of CARING

I meet a sweet soul - her story draws tears and

We bond over the interaction **CONNECT**

SHE speaks of her time - as a young mother

Raising her child - her passion for making meals

Meals she had indulged in - with HIM, through her travels

As a MARINE - **BUILDING TRUST** with me

She then peruses her MENU and begins to

COLLABORATE with me on making good choices for her well being and

She falters a little - as some strange words on the menu flash at her

As I begin to explain - I **LEAD** her **RESPONSIBLY** towards choices

That will help shape her future years - preserving her quality of life

Allowing her to enjoy the presence of family

As she continues to speak softly about her experiences as an aging mom and grandma

She speaks of making a layered dish with no starch- for her grandchild

And I share the moment with the choice on the menu- lasagna without pasta-

INVOLTINI - **INSPIRING CREATIVITY**

I thank her for her time and wisdom in helping me

EMBRACE CHANGE- Change that will fill her palate with joy

TOGETHER - WITH HUMANITY

TOGETHER WITH GRACE

TOGETHER WITH HUMILITY

TOGETHER WITH KINDNESS

TOGETHER AND GRATEFUL

AS ONE – FOOTPRINTS IN THE SANDS OF TIME

Sudha Garudadri
Carlsbad By The Sea

Poetry



front porch

Connect

Build Trust

Collaborate

Lead Responsibly

Inspire Creativity

Embrace Change

Steve Megyes
Claremont Manor

Wood, 24.5" x 15.5"



The Front Porch values standalone while also being interdependent. Just as our physical, emotional, social and mental health are separate aspects of the self, together they contribute to and comprise the whole person. In this needle-felted art piece there are separate visual elements that could stand alone but all together they create a fuller picture. Without all the elements, just as without all our values defining and inspiring our work, there would be a noticeable gap that would leave us feeling that something is missing. Each of our six Front Porch values play together and enable us to fully support our teammates and our communities.

Casey O'Neill
Social Call, Community Services

Needle felting with barbed needles and wool



We carry the organizational values with us every day so this necklace represents holding the values close, with each element serving as a specific reminder of how I can lean into the values.

Aventurine (Embrace Change): show courage, optimism and flexibility

Lapis Lazuli (Inspire Creativity): invite others into imagination and curiosity

Carnelian (Collaborate): foster an atmosphere of enthusiasm and energized teamwork

Pink Tourmaline (Build Trust): start with empathy and openness to forge mutual understanding

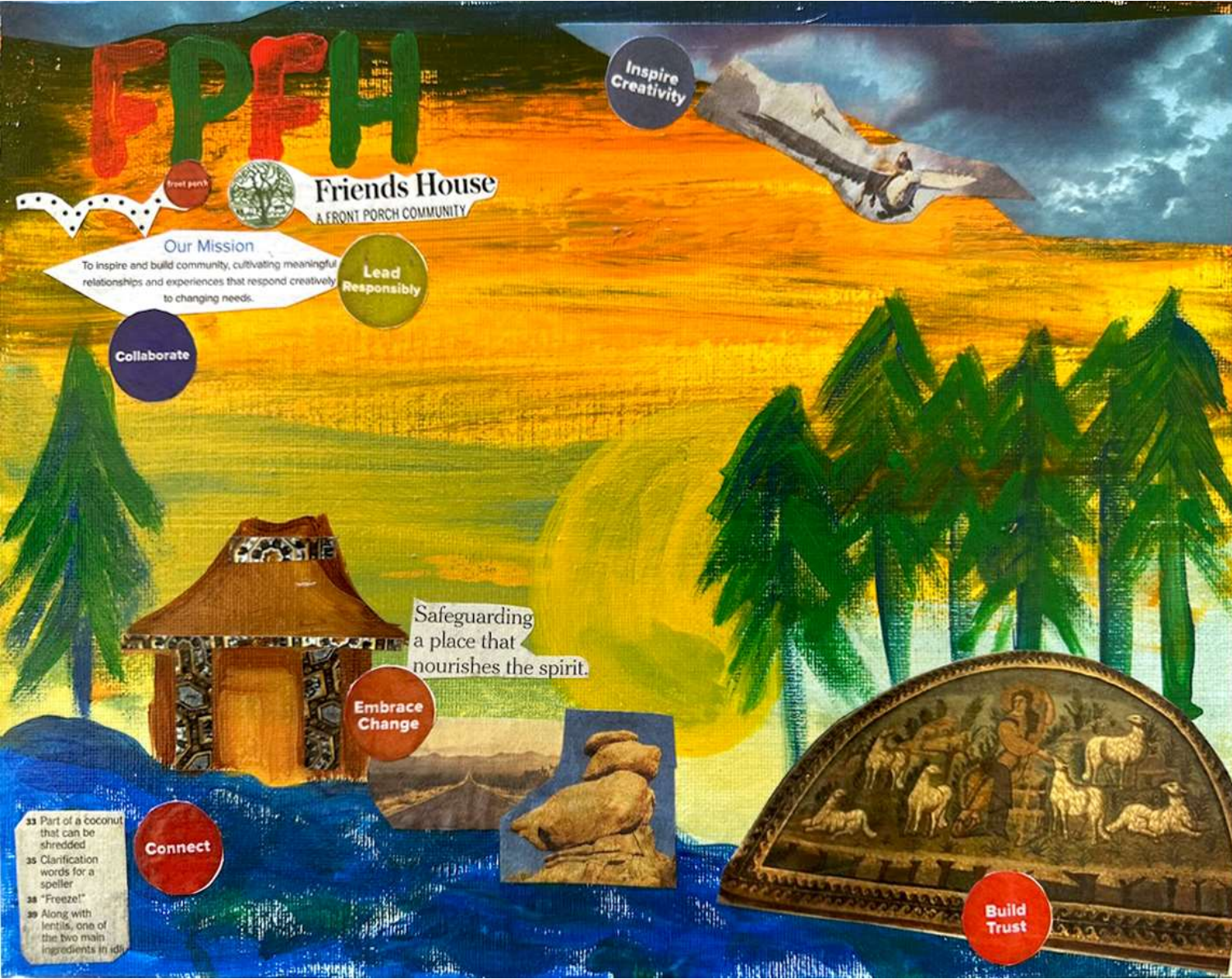
Labradorite (Lead Responsibly): cultivate clear communication, ethical guidance and adaptability

Brass (Connect): brass holds each of these elements together, it's what makes the rest of the piece functional

Katie Wade

Creative Spark, Community Services

Necklace, brass and gemstones



Representational Depictions of the Values

The Shepard **builds trust** with the flock. The opportunity to **embrace change** may be to travel down a new road. **Connections** can be the land to the sea or answering questions, as one tries to answer a crossword puzzle and the words may intersect one another. **Collaborations** are made between communities, where **responsible leadership** exists at different levels with a shared vision or mission. When we are **inspired to create**, we can soar to new heights. It's a good feeling.

Barri Johnson,
Korina Weatherson,
Robert Rubio,
Vicky Detlefsen,
Izzy Alvarez-Farias
Friends House

Acrylic and paper mod podge



Inspired by the true and incredible adventures of the spice traders who changed the course of history.

It took a leader that got tired of eating bland food. He set sail to see what the neighboring countries were eating.

If you head east, you will hit the motherland of spices ... India here we come.

All the chefs were cooking up a giant feast with all the new ingredients.

At dinner time there wasn't a dry eye in the house, people were weeping in their chicken paprika. My chef's hat is off to the early crew of the sail ships ... chefs are heroes.

Matthew Martinez
Friends House

Seashells, wood, string

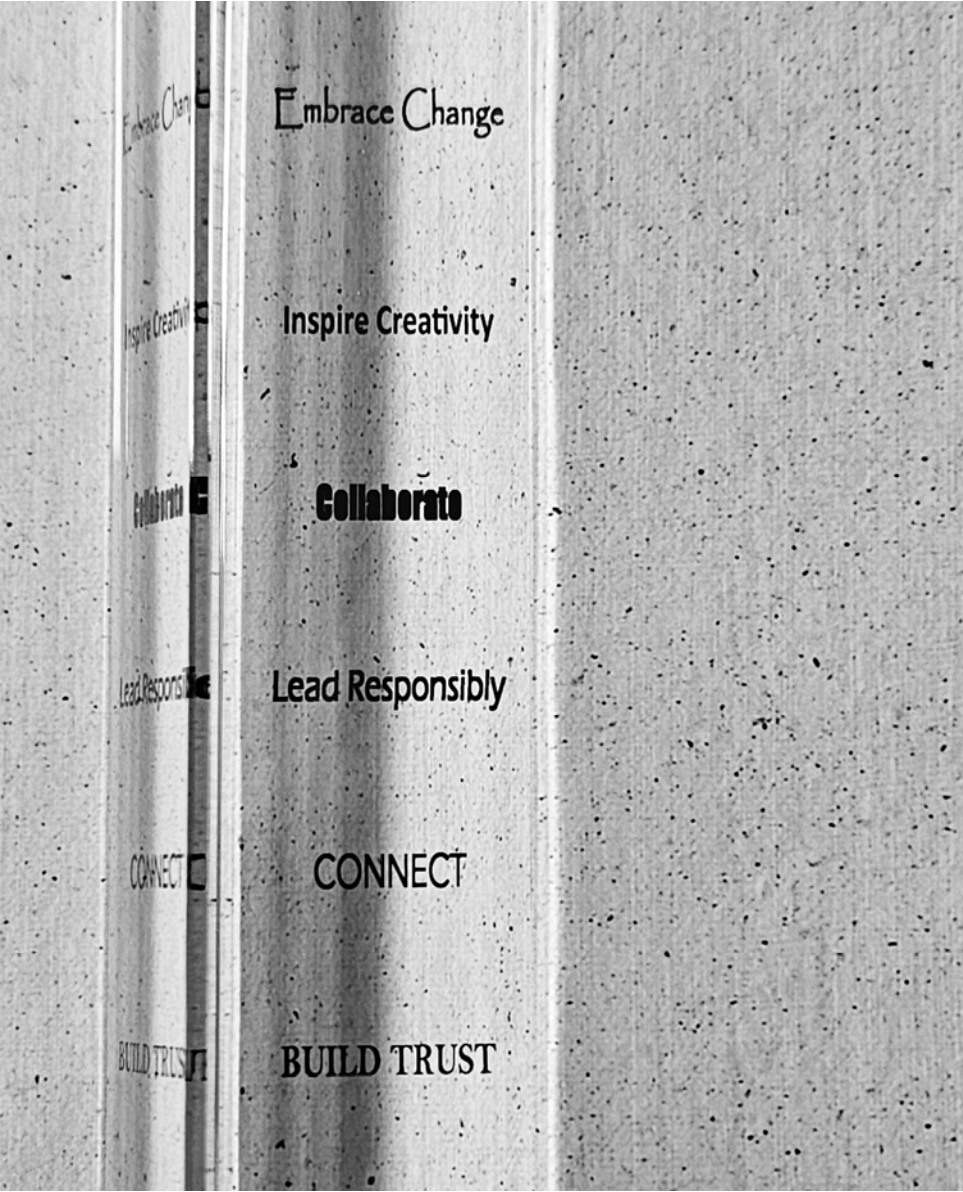


Aliya McFarland
St. Paul's Towers

Collage, drawing, watercolor, crayon

The artwork is hand drawings from a series of short videos of residents doing "Planet Qi Gong."

Planet Qi Gong was our answer to change during the pandemic, promoting creative movement in exercise class. The residents were asked to create a movement and name their planet. We connected with one another and the universe.

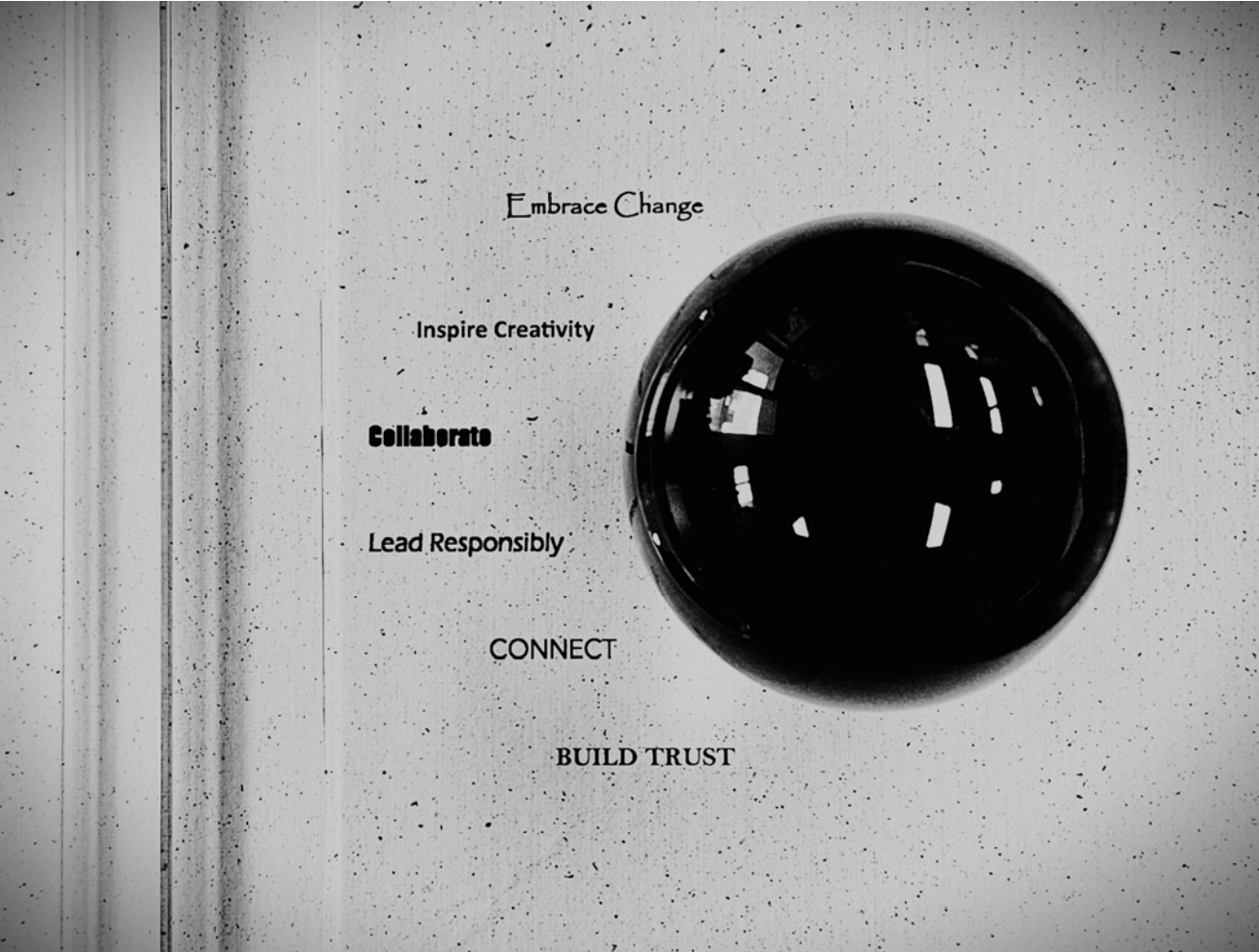


Reflecting on Our Values

Utilizing the medium of papyrus paper with the six values printed in varying fonts and a triangular transparent prism I took this black and white photograph. The unique perspective provided by the refraction of light through the prism allows each value to be read clearly, while also offering a different subtle angle to the left side. Additionally, I centered the space to the right of the prism to convey the potential opportunities for each community to live into these values moving forward.

Rev. Samuel C. Schaar
Sunny View

Photography

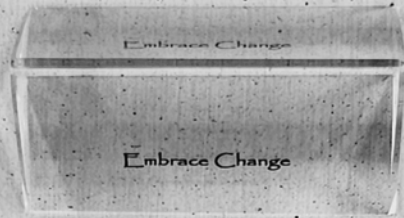


The Shape of Our Values

Utilizing the medium of papyrus paper with the six values printed in varying fonts and a triangular prism as well as a crystal sphere, I took this black and white photograph. The sphere, while clear, appears mostly black with reflections of ambient light sources, because it is viewed from above. The placement of the values around the curvature of the sphere conveys how community shapes our values and values shape our community

Rev. Samuel C. Schaar
Sunny View

Photography



Inspire Creativity

Collaborate

Lead Responsibly

CONNECT

BUILD TRUST

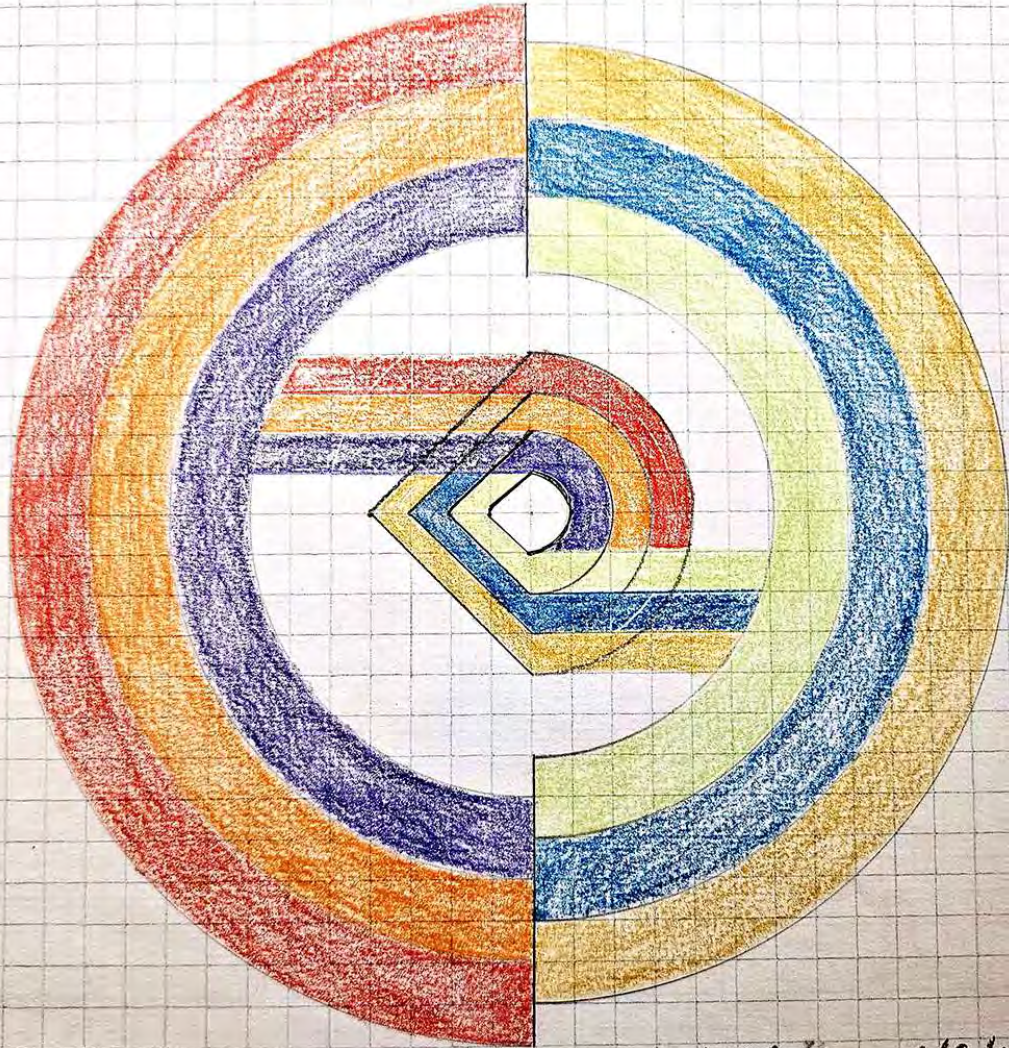


Building on Our Values

Utilizing the medium of papyrus paper with the six values printed in varying fonts and a triangular prism as well as a crystal sphere, I took this black and white photograph. The sphere sits below the vertically oriented values with Building Trust intentionally placed at the bottom to convey its importance from the perspective of the artist. Additionally, the small triangular prism which sits atop the phrase Embrace Change highlights the need for community to adapt to our ever-changing cultural realities as we lean into the future.

Rev. Samuel C. Schaar
Sunny View

Photography



Samuel C. Schaar 6/9/23

Values in Geometric Abstract

Utilizing the medium of graph paper, drafting tools and color pencils, I repurposed the six colors of the circles in which the Front Porch values are set to create an image that conveys both the individuality of each value and the synergy among them with flow and movement. In addition to harnessing curves and partial circles, I attempted to convey the shape of the human eye with the goal of communicating the need to see all six values at work together in the life of community.

Rev. Samuel C. Schaar
Sunny View

Pencil on graph paper



Like our values, the strands move together and transfer energy to each other. They influence and relate to each other. Each strand is nice on its own, but they're exponentially more wonderful in a grouping.

Mary Kott
Support Services

Beadwork

Today, I find myself re-watching a documentary about Bill Murray! "The Bill Murray Stories: Life Lessons Learned from a Mythical Man," a documentary centered on so many of these wild "by chance" moments that folks have had where Bill Murray shows up in the most seemingly random and ordinary situations and just ... makes them awesome. Or at least way more awesome than they already were.

The point of the story, for me anyway, is not that Bill Murray changes people's lives by exposing them to his celebrity. The point is that Bill Murray TRANSFORMS people's lives by being present with them. He brings joy by authentically sharing and making experiences, together with them (not for them), in community with his fellow citizens.

These experiences roundly leave people happy—overwhelmingly so! To be sure they also shine bright lights on the beauty and importance of "here and now" and the things that might be more cherished in every moment. With Bill Murray's help, by his mere and actual presence, awesomeness is found in moments that otherwise might be fleeting, or at best under-appreciated.

I offer that we all take a minute to take a breath and appreciate one another and what we've got here at Front Porch and what it is that we can bring to one another. Appreciate the awesomeness that flows over every person and our larger community in ways that perhaps we don't take the time to always notice.

So, be present, look around, notice, comment, connect, engage, smile. You might discover something amazing right here in front of you and also know that every single one of us can transform any experience by our presence ... And you never know, maybe you'll bump into Bill Murray along the way! Following are a sampling of my own "noticings" at Front Porch.



Sean Kelly
Support Services

Essay and photography

“Embracing Our Values”

Embracing Our Values

Lead Responsibly, our leaders let us and help us become leaders in our own way through training and letting us find our own way to do things.

Collaborate and Connect with each other and that is all done through the trust that we have built we each other.

Without connection to fellow staff members and residents it wouldn't be worth coming to work.

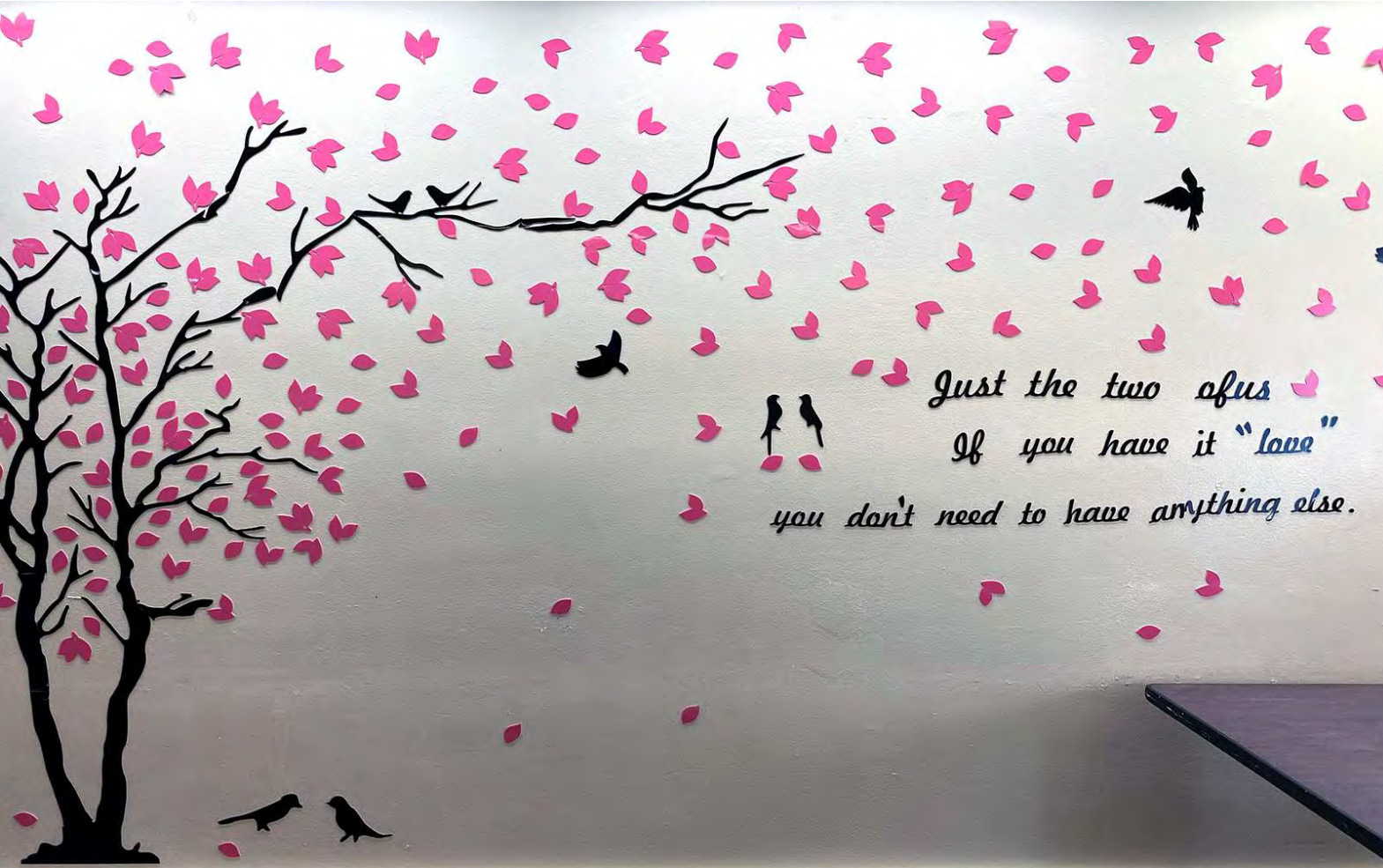
We have been raising butterflies. These butterflies have helped residents at a very difficult time in their life. Showing them how to Embrace Change and keep moving forward.

We keep inspiring our creative spark to help us find a different way to get through each day and inspire other people to do better.

Sandy Liebman
Walnut Village

Collage





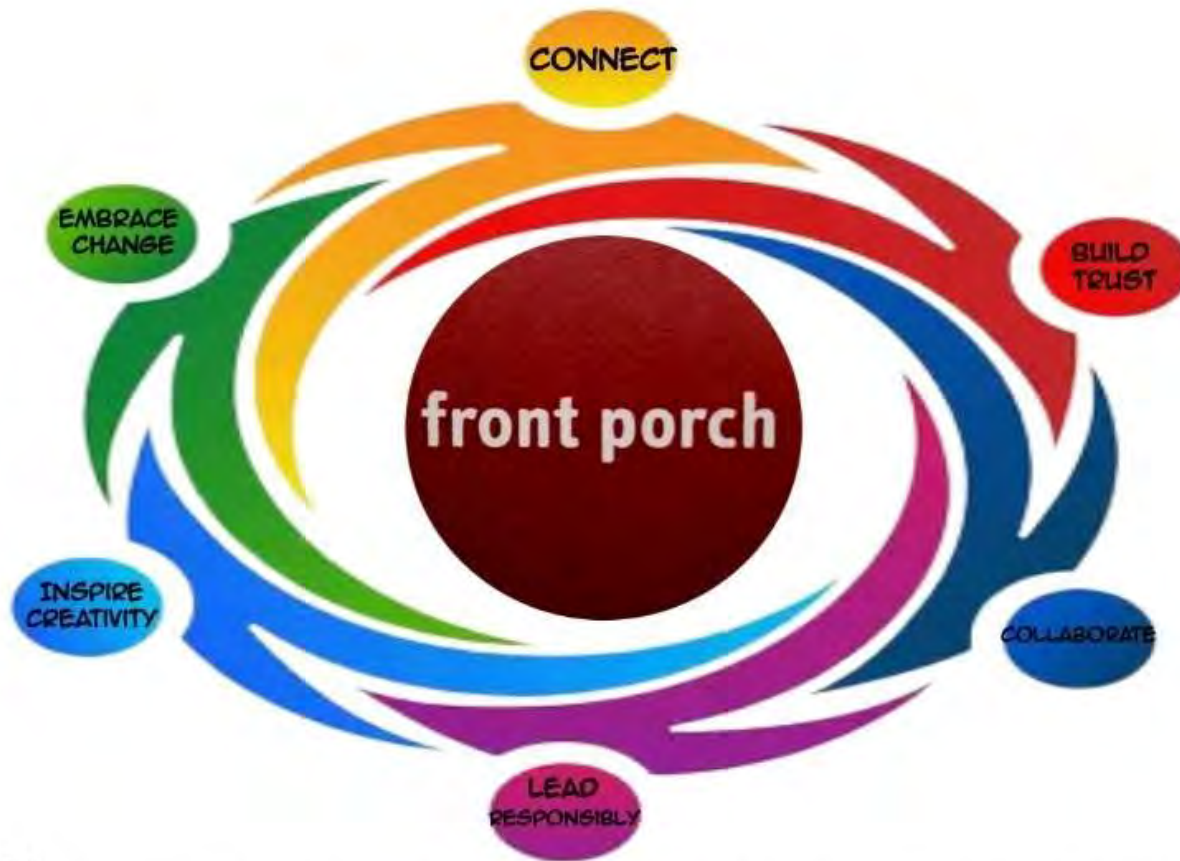
Connecting and collaborating with staff and residents.

Building our emotional support system.

Encouraging collaborative behavior and building trust and creative thinking.

Belinda Talley, Staff and Residents
Webster House Health Center

Wall art



VISION:

TO EMPOWER INDIVIDUALS TO LIVE CONNECTED AND FULFILLED LIVES THROUGH COMMUNITY AND INNOVATION.

MISSION:

TO INSPIRE AND BUILD COMMUNITY, CULTIVATING MEANINGFUL RELATIONSHIPS AND EXPERIENCE THAT RESPOND CREATIVELY TO CHANGING NEEDS.

UNITY

The values are lived out in all departments of our community.

Webster House is like a family, we work together in unity, embracing the values and mission.

We are here delivering service excellence and achieving outstanding customer satisfaction. Our greatest resource is our people. We treat each other with respect. We work as one team to accomplish goals. Together, we take initiative to do what's right. We are courageous. We adapt.

Mayra Hernandez
Webster House

Digital art

CONNECT

By doing greater than good with a good intention to Promote and develop a good team mentality and working together to support company's mission, purpose and values. By doing so, listen to your employee, show you respect them as people and the work they do and know more about them so you can lead effectively.

BUILD TRUST

Respect is earned not a given. So, lead by good example and follow through on your promises - is one-way to building trust to your employee.

COLLABORATE

Align company goals and practices with values. It is not a material goods we inspire for but, the values and beliefs that give meaning to every one's lives. We often involve and prioritizing good communication between parties to ensure your goal align and all participants understands company expectation.

LEAD RESPONSIBLY

A good leader always shows open communication to his/her employee and taking accountability, courage respect, and resiliency. Letting employee know what his main target or purpose and focus on the end results, avoiding distraction and leading by great example.

INSPIRE CREATIVITY

Know your employee's ability and creativity to explore ideas that they are good at and combined all those ideas to create inspiring team. We need to work as a team not competition to each other. Encourage employee to join or participate open discussion and acknowledge their openness and great ideas.

EMBRACE CHANGE

Changes happen all the time. Be flexible and embrace changes whatever it may be by accepting the change, stay positive, get a fresh perspective, focus on what you can control, and acknowledge any feelings that come up as change are made in the workplace.

**COMMITMENT, DEDICATION AND HARD WORK
will impact people lives!
Embracing SIX VALUES and CONNECTING
with one another to serve
generates BEST COMMUNITY**

**Cory Mallari and Jose Zelazny
Webster House Health Center**

Essay



Aging is not lost of youth but, a new stage of opportunity, Courage, and strength.

Life is like all hard liquor the older we get the tastiest and smarties we get. So, Guard life accordingly.

Youth is the gift of nature but, age is a work of art

Cory Mallari and Jose Zelazny
Webster House Health Center

Digital art, paper, tape



The heart - we give everything for residents.

When I work with my heart, I put my 110% in everything that I do. The residents mean so much to me, like my second family, because I feel really loved from them and I give a lot of love and support for them.

The hands - we, as a company embrace residents with love.

Ivonne Fahme
Wesley Palms

Paint and porcelain on canvas



Connect

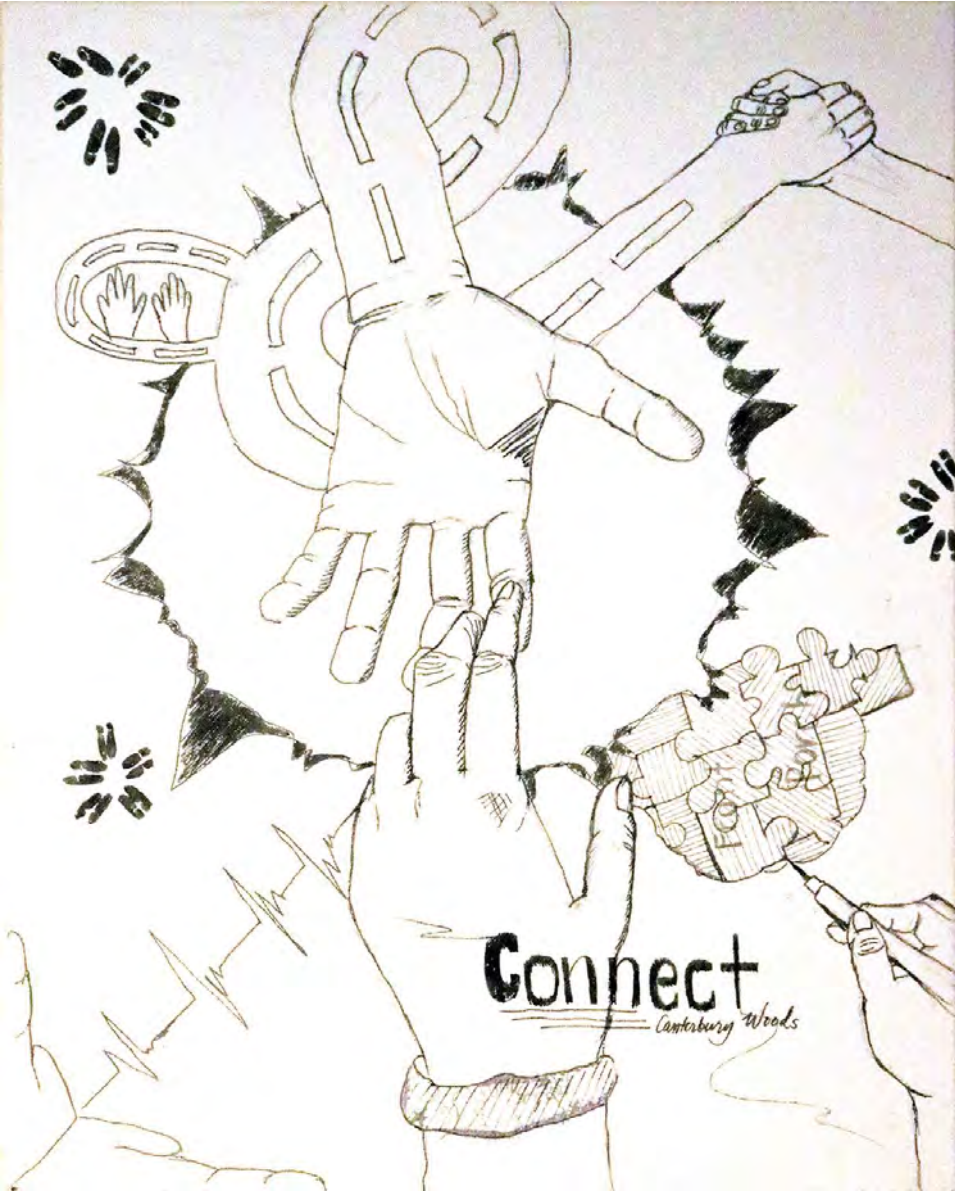
We welcome everyone's contributions. Our greatest resource is our people. The relationships we share build community and strengthen us.



front porch

2nd
Place

Connect
The joining of hands representing
the connections we make.



Cristy Odad
Canterbury Woods

Pencil on canvas



M. Esther Sanchez
Good Shepherd, CARING Housing Ministries

Painting



The cake's overall design represents life, and we all share a connection with food in this life.

The waves represents our human emotions.

The shells, big and small, represents our goals and dreams, and our emotions (waves) travels up and down as approach and overcome them.

The inside has dark cake and light cake, representing the dark and light inside all of us, tempered by a layer of sweetness (the red strawberry jam) that we're all capable of exuding.

Food **connects** us. Life experiences **connect** us.

Faustino "Tino" Padilla
Casa de Mañana

Cake art



CELEBRATING CARLSBAD BY THE SEA
CONNECTING AND COLLABORATING



00:02.20



Carlsbad By The Sea staff and residents
Carlsbad By The Sea

Video



Two natural stone glass and metal necklaces to be worn in harmony or separate with matching bracelet.

Vicky Detlefsen
Friends House

Natural stones, metal, glass



Each crochet stitch represents an employee. Standing alone, one stitch is not remarkable, but when woven together the stitches are stronger and more beautiful. This shows how we, as a community, connect, work together and build trust to embrace the Front Porch values.

Blanca Alvarado
Spring Lake Village

Crochet



Connect – a tree's root system and how we are able to connect older generations to newer ones.

Arianna Gomez
Vista del Monte

Watercolor



Creation & Distribution of Lap Quilts to Community



Connecting with Residents, Staff & Community



Save the Monarch Butterfly

At Walnut Village we believe in connecting with residents, staff and community. Currently we are doing a few different outreach projects.



Recognizing our Nurses on National Nurses Week



At Walnut Village we are always **CONNECTING!**



Covid Vaccine Clinic Residents & Staff



Million Thanks Project Reading & Sending Letters to Military



Spark of Love Toy Collection



Earthquake Preparedness Drill



Clothing Collection for WorkingWardrobe

Judi Marsh
Walnut Village

Photo collage



**Build
Trust**

Our actions inspire trust and confidence. We treat each other with respect and fairness. We are open, inclusive, honest and keep our promises.



Collaborate

Our best performance happens when we learn and grow together. Through listening and communication, we seek input, share ideas, and work as one team to accomplish our goals.

1st
Place



In our communities it takes everyone to work together to complete the tasks. It does not matter what background you are from, we all need to collaborate with each other to make sure we are giving the best service we can to each other as well as residents and vendors. By working as a team, we are much better equipped to accomplish our goals.

Joel Goldfain
Walnut Village

Paint and crayons on canvas

Collaboration Haiku

A team means power
Slay dragons, build castles but
Not just me – by us

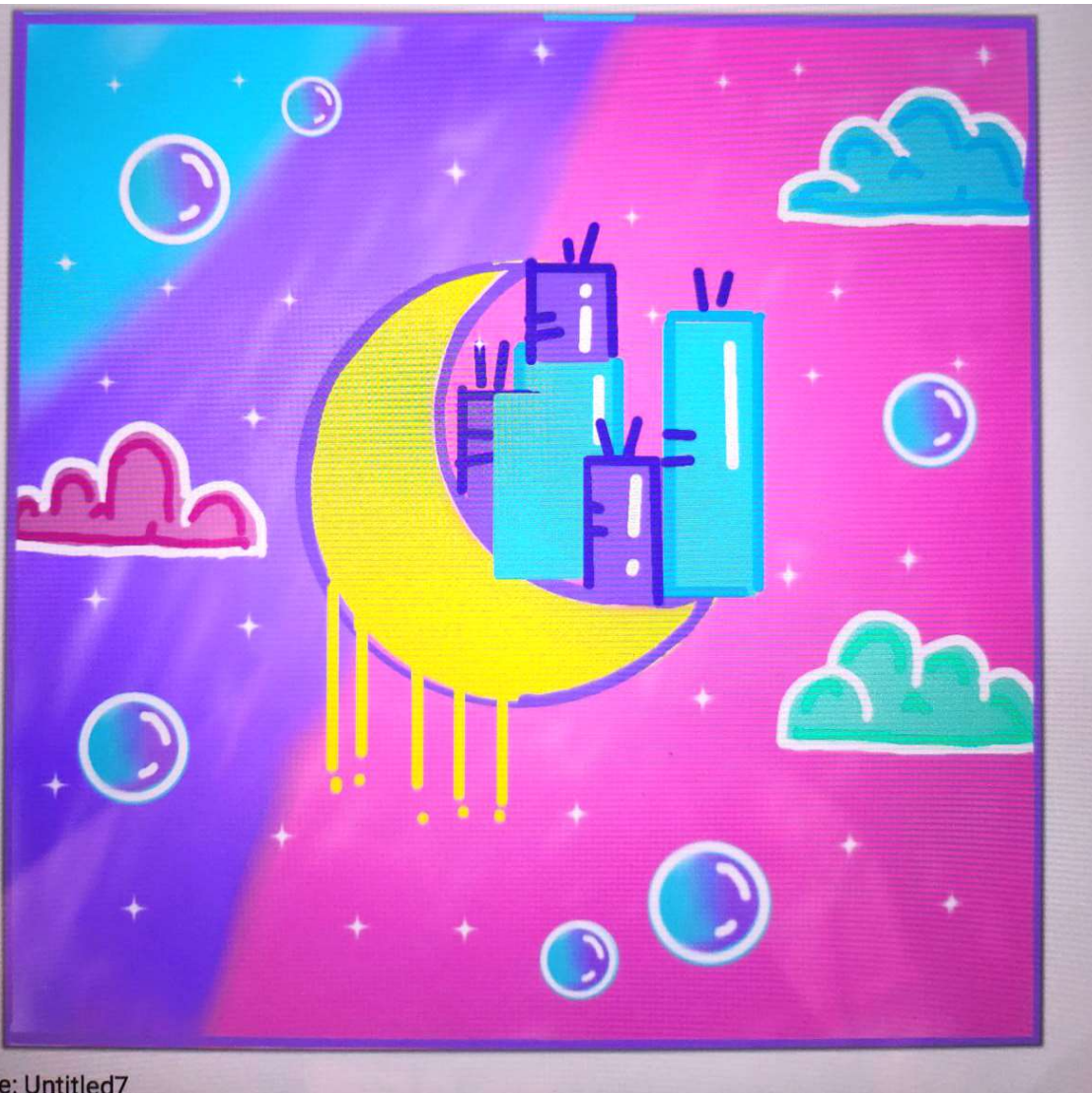
Marlin Lathrop
Presidio Gate Apartments, CARING Housing Ministries

Haiku



Karen Gonzalez
Good Shepherd, CARING Housing Ministries

Acrylic paint



Title: Untitled7

Inspired by the artwork created by my daughter I thought of our Front Porch values.

It represents day and night. The bold colors change throughout the picture, which inspires creativity amongst others regardless of race, ethnicity or gender. The moon seems to hug the buildings despite their differences and come together (Collaborate) to ensure peace, respect and thoughtfulness amongst each other. The bubbles are our thinking caps to find creative ways (Inspires Creativity) in which we can help each other to achieve the same goals. The buildings on top of the moon shine brightly through and has confidence in knowing that change happens and we stay positive during those times of change. If we put our minds to it, we can achieve it!

Anne Cook
Sunny View

Digital art inspired essay

VILLA GARDENS



We don't just work together, we also have fun together.

That's what makes us a team.

Berenice Torres
Villa Gardens

Photo collage



Lead Responsibly

Leaders unlock potential, empower others, and share responsibility for strategy and results. Together, we take initiative to do what is right and achieve high standards.



3rd
Place

The handbag represents Leading Responsibly by incorporating recycled materials thus diverting them from landfills.

Maribel Flores
Friends House

Recycled materials - plastic bailing and soda can pop tops



**Inspire
Creativity**

We do everything Humanly Possible[®] to create our future. As a team, we take risks and learn from success and failure. We are courageous, open-minded and encourage fresh ideas.

Inspiring Creativity with Bread Art

In my role as a cook I am given the freedom to share my creative ability of making creatures out of bread.

I Inspire Creativity by decorating the top of the salad bar with dragons and lizards made from bread and decorated with various vegetables and adding sea creatures for a Luau. It gives the residents something to enjoy and talk about while getting their meal.

Ramon Sigala
Walnut Village

Bread art



Honorable
Mention

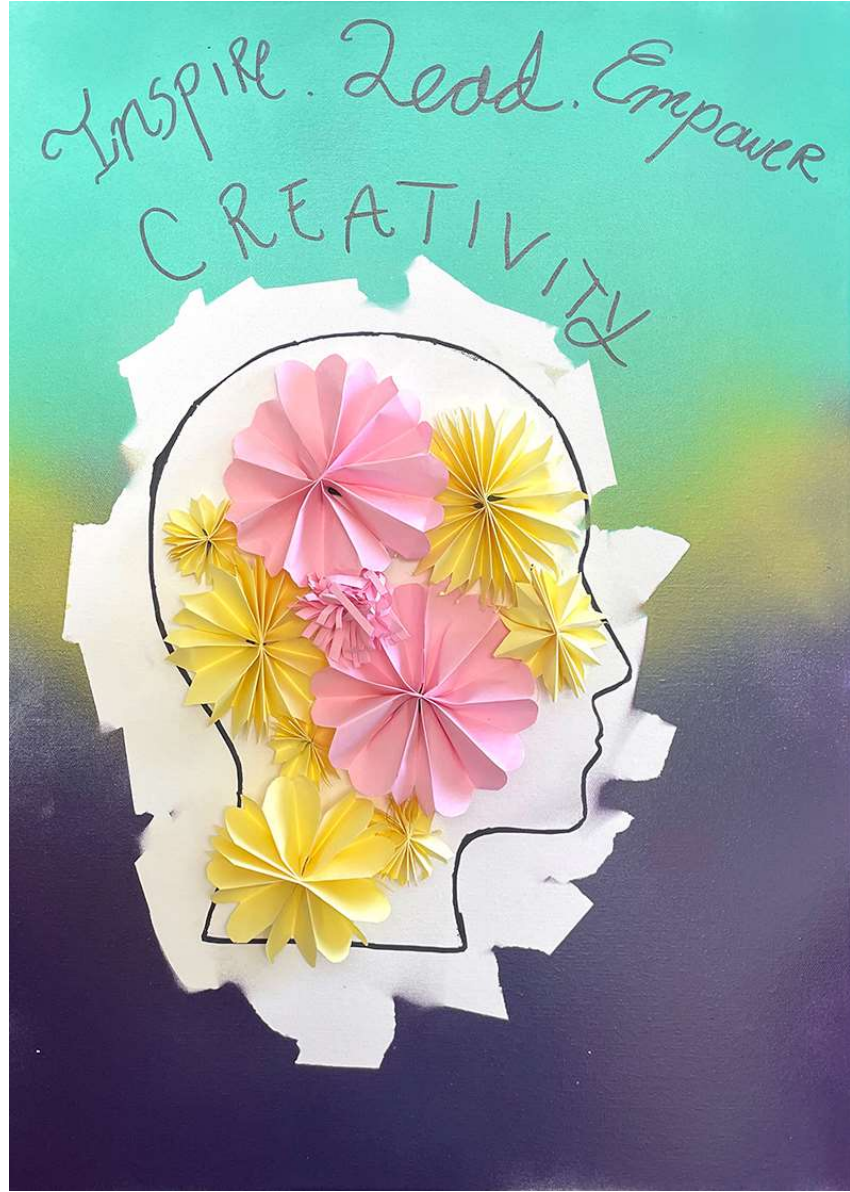


The ideas and process of painting employed are fresh and original.

Being courageous and open-minded, the painter first painted a traditional landscape and then tried to abstract the image because in doing so will risk failure or success.

Robert Perez Jr.
San Francisco Towers

Acrylic on canvas



Key Prochain
Good Shepherd, CARING Housing Ministries

Paint, ink and paper on canvas



Free Your Mind

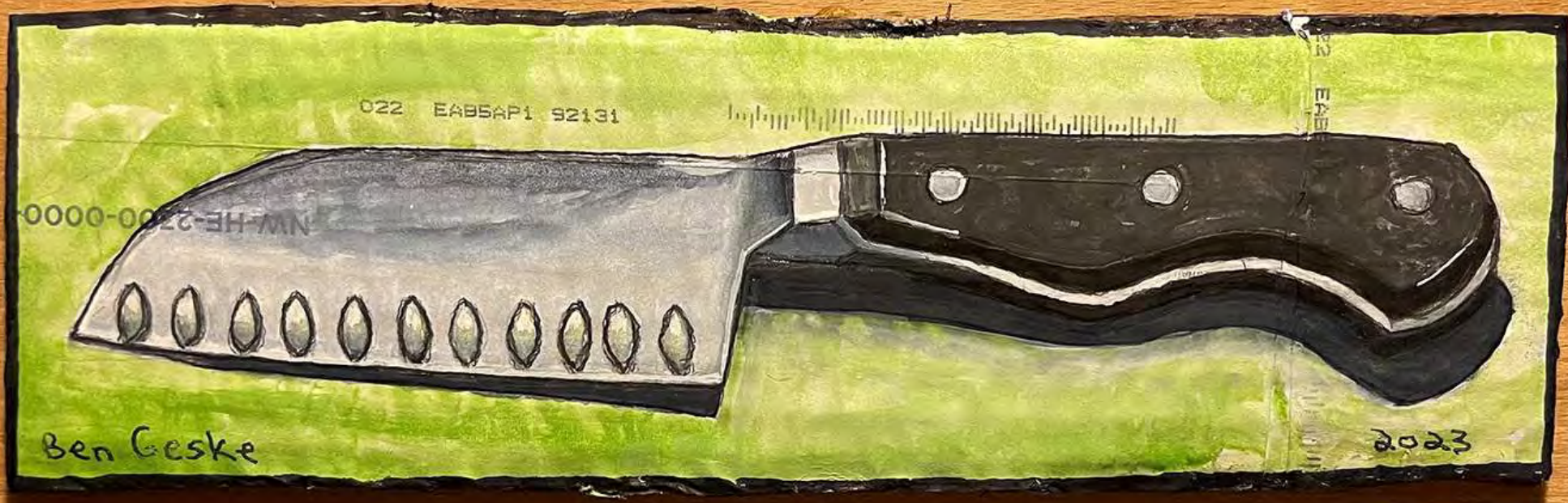
I did not have a plan for this art piece, instead, I let my creative juices flow and allowed myself to paint freely. The end result reminds me of a Dr. Seuss book, which is the epitome of creative imagination.

The different colors can represent past experiences, ideas and feelings we take into consideration when making a decision, big or small. Creativity requires one to be open-minded and willing to take risks. We may not think a certain idea will be successful, but we'll never know if we do not try.

Rather than using dark colors often associated with grief and sorrow, I chose to paint this piece with bright colors to express liveliness, optimism and happiness.

Rosanna Aragon
Social Call, Community Services

Paint on canvas



“Bon Appetit”

The piece symbolizes using what you have at your disposal to find solutions and Inspire Creativity.

Ben Geske
Fredericka Manor

Watercolor with ink on letter envelopes glued to recycled cardboard on wood



A waterfall's soothing peaceful sound and calming effect allows one to reflect, be refreshed and better able to Inspire Creativity.

Grant Edelstone
Support Services

Photography



Barbie Inspired Happy Hour

This Happy Hour Inspired Creativity because it engaged residents with the nostalgic Barbie theme that everyone can relate to and cultivated a meaningful, creative experience that all were able to have fun with and enjoy. One of the residents was heard saying this created “many smiles and laughter.” Isn’t that what it is all about?



Maria Contreras
Walnut Village

Photo collage



Embrace Change

Everything is changing, from needs to expectations to the world around us. To succeed, we must constantly adapt and improve, delivering service excellence and achieving outstanding customer satisfaction.

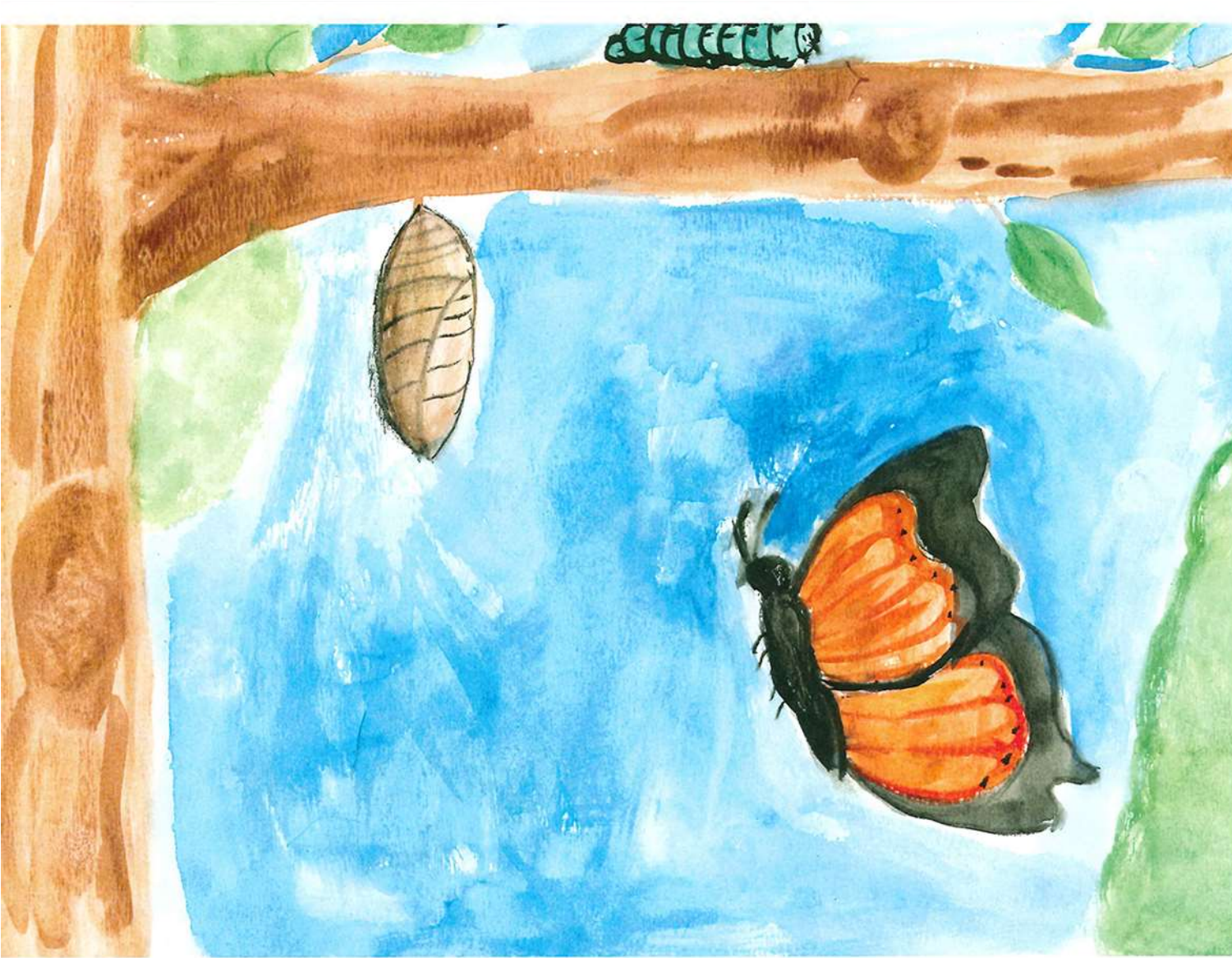
Honorable
Mention

Embracing Change -
how a person can
adapt to changes at
work and the
professional growth.

Realizing my passion
of working with the
residents and
embracing the
change that goes
with the job.

Arianna Gomez
Vista del Monte

Watercolor



EMBRACING CHANGE

SOUTH BAY RETIREMENT



Rosma Dolce, Serenity Leal, Sharon Booker, James Greer, Jesse Smith
South Bay Retirement, CARING Housing Ministries

Skit, video



Growth Stems From Change

The artwork displays the blending of two different colors, blending with one another in the middle and embracing the change. Although there is a distinct contrast on both sides, the two colors intertwine and come together to create a beautiful whole.

Front Porch staff encourages folks to join our communities, and these folks represent the reddish-orange color of the painting. The community is the white color of the painting, accepting the resident as they are and not forcing them to change. Instead, the two parties meet in the middle, embracing one another's attributes. The resident has left their old home for a new one, which takes courage and strength. Change can be scary, but without change, we do not grow. Growth stems from change, which can come at any age.

Rosanna Aragon

Social Call, Community Services

Paint and plaster